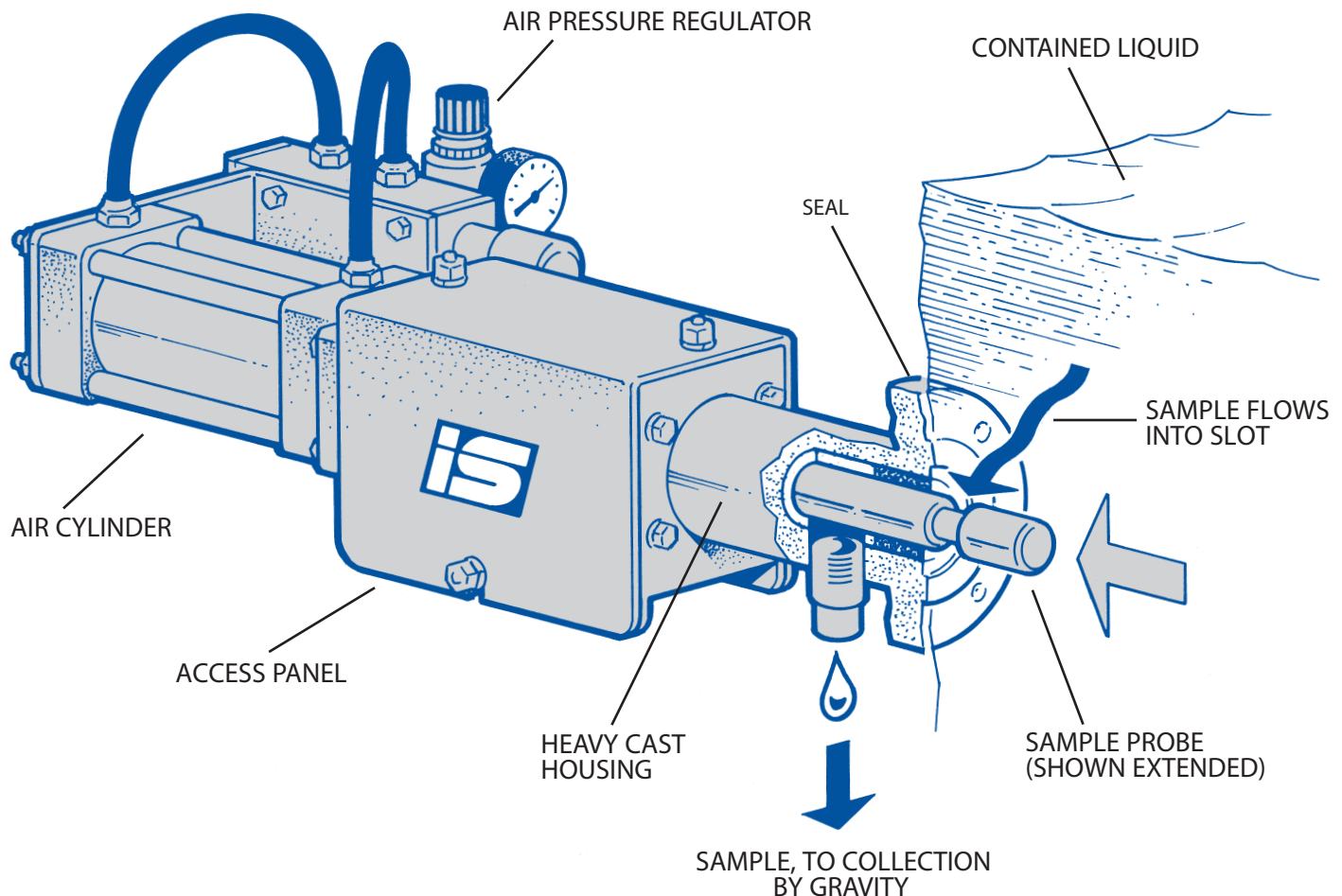


INTERSYSTEMS INDUSTRIAL SAMPLERS

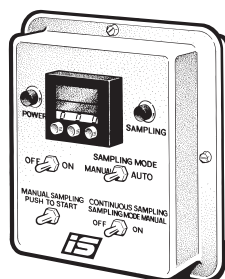


LF

An industrial sampler for a wide viscosity range of liquids, used to extract samples from pipe lines or tanks. Sampler is mounted on the wall of a tank or pipe line via a matching 150# flange. When activated, the 1" diameter sampling probe extends into the liquid line. Sample is collected in the probe's cavity (8cc standard), then probe retracts out of the liquid stream and seals the line. Closed systems are available and may be jacketed and/or purged. Standard construction: 316 stainless steel seal housing and sample probe with Teflon seals. Other construction materials available as required by application.

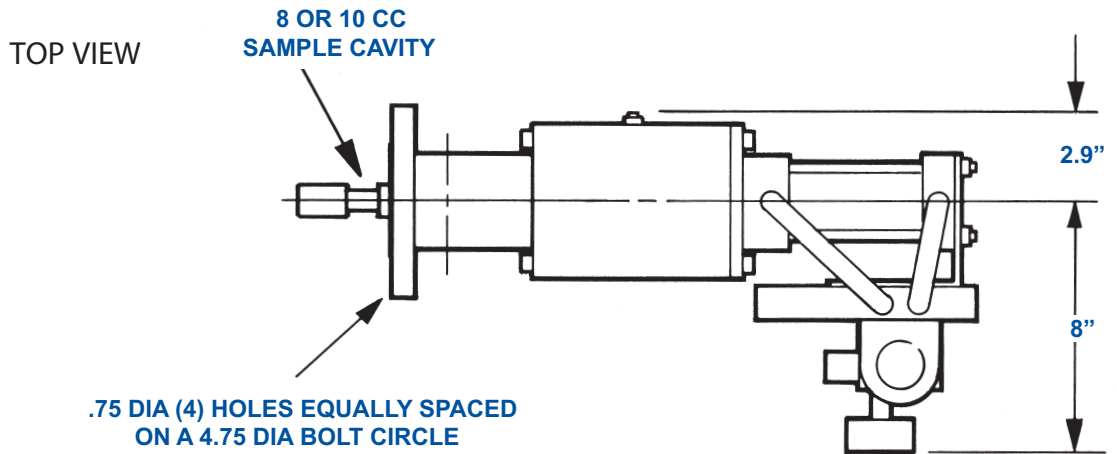
CONTROLS

InterSystems control packages are available to suit any sampling control application. The standard units allow manual and automatic sampling modes and contain all the essential components to adjust and control the timing of sampling operations. These units can handle a wide variety of voltages and frequencies and can be constructed for most environments.

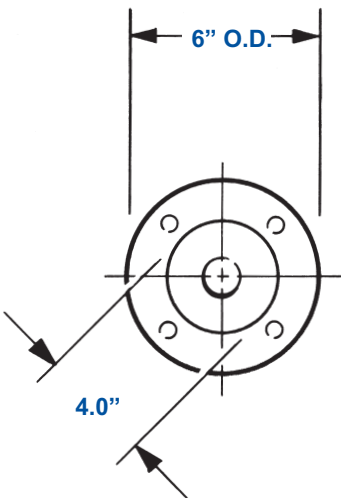


POWER REQUIREMENTS

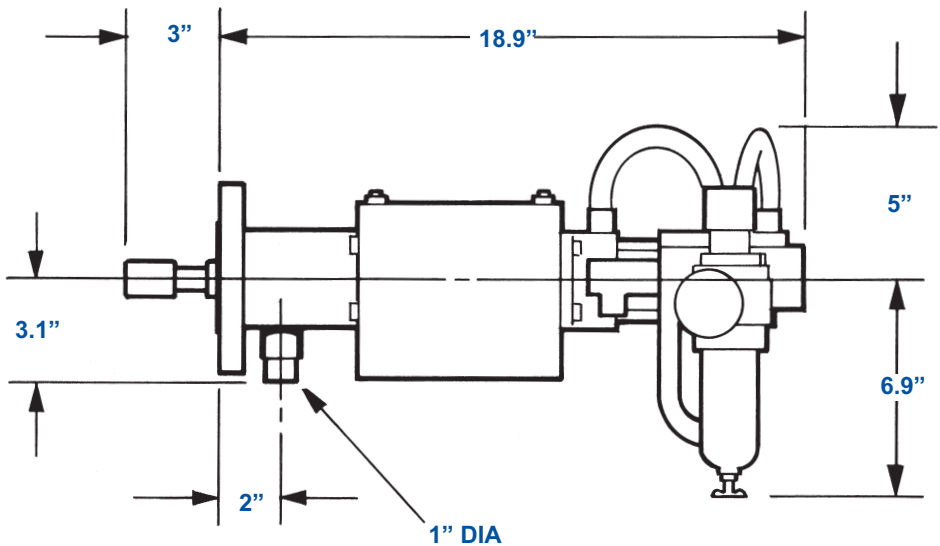
Electric: 110V, single phase.
Pneumatic: 80 to 100 PSI.



FLANGE



SIDE VIEW



Intersystems
 9575 N 109th Ave
 Omaha, NE USA 68142
 214.495.9713
 Fax 214.495.9741