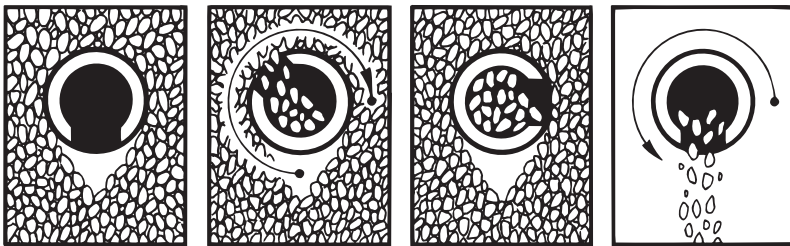
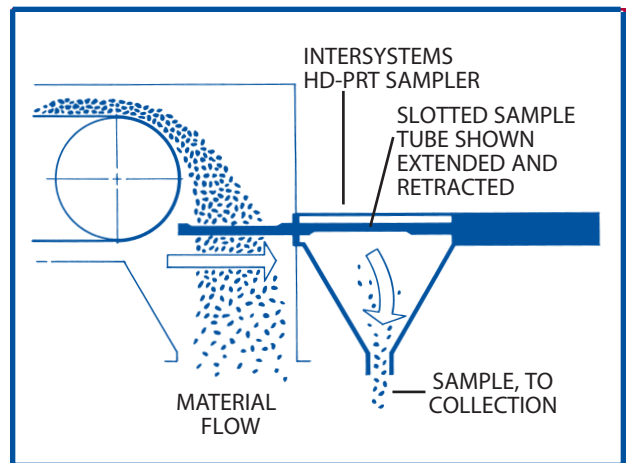


## HD-PRT SLOTTED SAMPLE TUBE OPERATION (END VIEW)



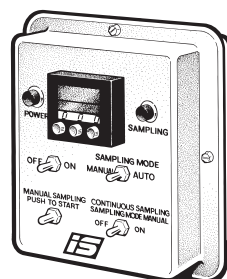
1. At rest and retracted. Tube starts to enter product stream at the 6 o'clock position then ...
2. As the tube moves through the product stream, it rotates from the 6 to 3 o'clock position while collecting the sample.
3. After the collection, tube retracts back into the HD-PRT sampler.
4. Retracted, the tube then rotates back to the 6 o'clock position and releases sample into the chute ready to repeat.



An industrial sampler for collecting samples from a wide range of materials. It samples fines, small or large particles and also works with abrasive materials. Provides representative and repeatable samples, employs very simple and reliable operation and uses minimum headroom. Mounting may be in chutes, hoppers, at belt-end or head chutes. When activated, a slotted sample tube enters the product stream with the slot facing down. While fully extended, the sample tube rotates 270 degrees, taking a representative sample through the product stream. Sample tube then retracts out of the product stream, into the sampler housing and deposits the sample into the discharge. Sample tube can be driven pneumatically or hydraulically. Standard construction: heavy gauge carbon steel housing and 304 stainless steel sample tube. Other construction materials available as required by application.

## CONTROLS

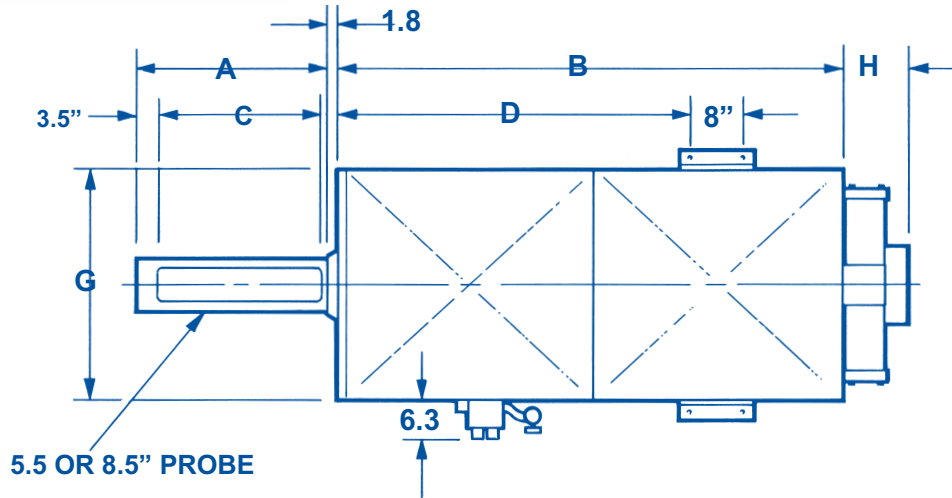
InterSystems control packages are available to suit any sampling control application. The standard units allow manual and automatic sampling modes and contain all the essential components to adjust and control the timing of sampling operations. These units can handle a wide variety of voltages and frequencies and can be constructed for most environments.



## POWER REQUIREMENTS

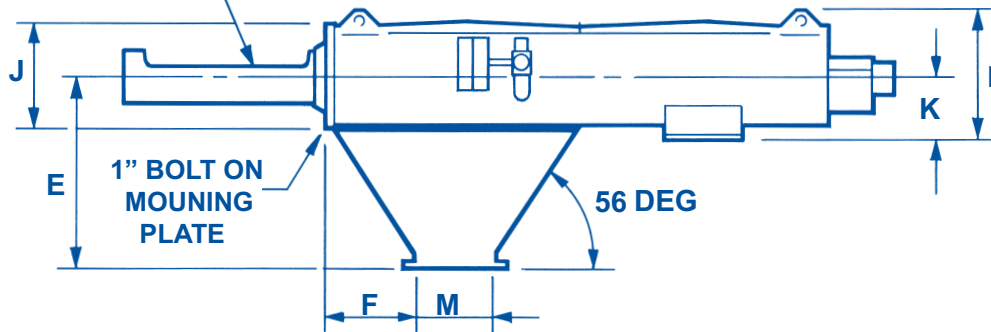
Electric: 110V single phase control.  
Pneumatic: 80 to 100 PSI.

TOP VIEW



3.5" WIDE ON 5.5" PROBE  
5.5" WIDE ON 8.5" PROBE

SIDE VIEW



### 8.5" PROBE

SIZE												AIR CONSUMPTION SCFM	
	A	B	C	D	E	F	G	H	J	K	L	M	WEIGHT (LBS)
12.0	43.0	8.0	28.5	16.25	5.5	36.0	10.6	16.0	9.8	20.4	12.0 SQ	1050	8.8
18.0	55.0	14.0	37.5	20.75	8.5	36.0	10.6	16.0	9.8	20.4	12.0 SQ	1150	11.5
24.0	67.0	20.0	46.5	25.25	11.5	36.0	10.6	16.0	9.8	20.4	12.0 SQ	1250	14.3
30.0	79.0	26.0	55.5	29.75	14.5	36.0	10.6	16.0	9.8	20.4	12.0 SQ	1350	17.0
36.0	91.0	32.0	64.5	34.25	17.5	36.0	10.6	16.0	9.8	20.4	12.0 SQ	1450	19.7
42.0	103.0	38.0	73.5	38.75	20.5	36.0	10.6	16.0	9.8	20.4	12.0 SQ	1550	22.4
48.0	115.0	44.0	82.5	43.25	23.5	36.0	10.6	16.0	9.8	20.4	12.0 SQ	1650	25.2
54.0	127.0	50.0	91.5	47.75	26.5	36.0	10.6	16.0	9.8	20.4	12.0 SQ	1750	27.9

### 5.5" PROBE

SIZE												AIR CONSUMPTION SCFM	
	A	B	C	D	E	F	G	H	J	K	L	M	WEIGHT (LBS)
12.0	41.0	8.0	27.0	16.5	7.0	30.0	9.1	11.0	8.3	17.4	8.0 SQ	800	6.2
18.0	53.0	14.0	36.0	21.0	10.0	30.0	9.1	11.0	8.3	17.4	8.0 SQ	900	8.1
24.0	65.0	20.0	45.0	25.5	13.0	30.0	9.1	11.0	8.3	17.4	8.0 SQ	1000	10.0
30.0	77.0	26.0	54.0	30.0	16.0	30.0	9.1	11.0	8.3	17.4	8.0 SQ	1100	11.9
36.0	89.0	32.0	63.0	34.5	19.0	30.0	9.1	11.0	8.3	17.4	8.0 SQ	1200	13.8
42.0	101.0	38.0	72.0	39.0	22.0	30.0	9.1	11.0	8.3	17.4	8.0 SQ	1300	15.7
48.0	113.0	44.0	81.0	43.5	25.0	30.0	9.1	11.0	8.3	17.4	8.0 SQ	1400	17.6
54.0	125.0	50.0	90.0	48.0	28.0	30.0	9.1	11.0	8.3	17.4	8.0 SQ	1500	19.5

US MEASURES (INCHES, POUNDS OR GAUGES)



Intersystems  
9575 N 109th Ave  
Omaha, NE USA 68142  
214.495.9713  
Fax 214.495.9741