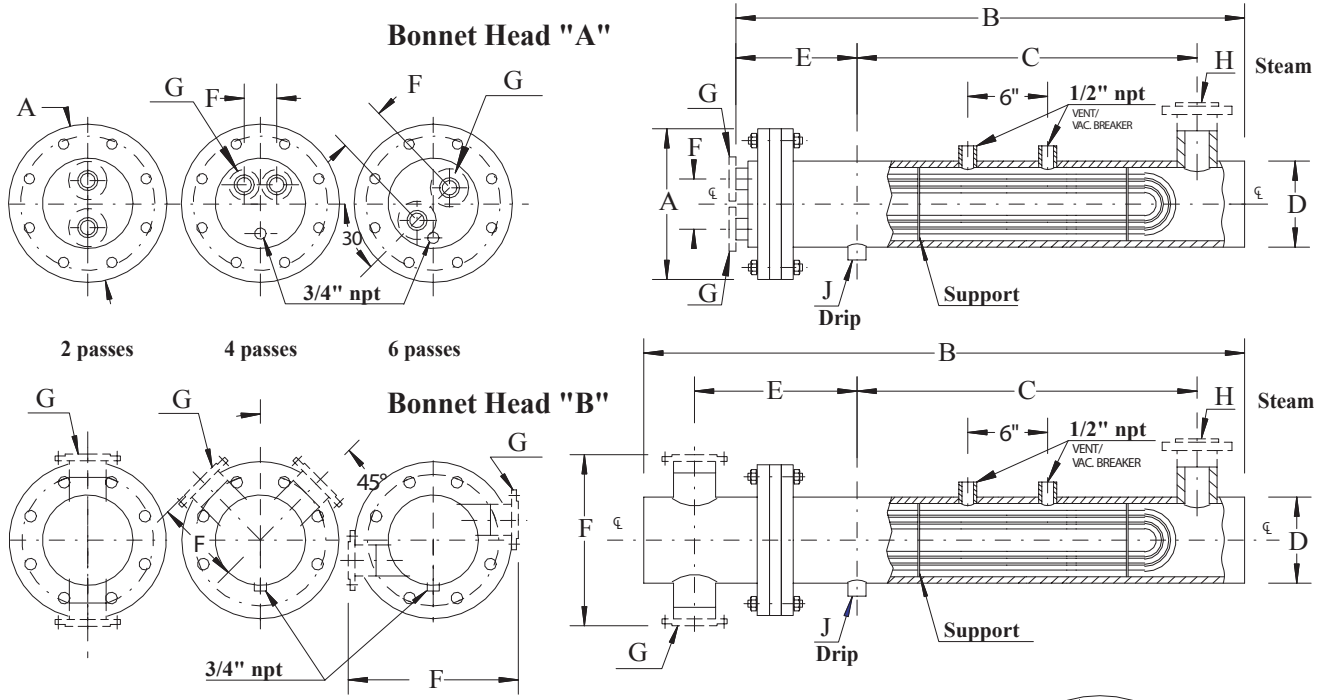


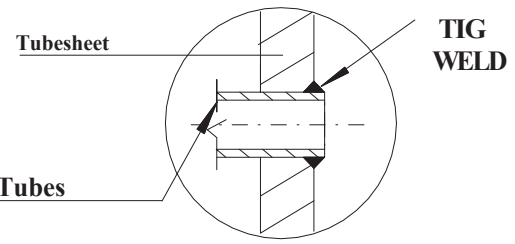
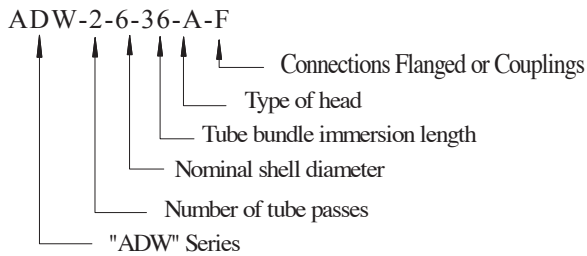
"U-tube" Steam to Water Instantaneous Heaters Series "ADW"

Instantaneous heaters series "ADW" are fabricated from 316 stainless steel tubes, TIG welded to the stainless steel tubesheet. The ADW model is used to heat city water for domestic usage. The degasation of heated water releases oxygen and other gases. The water side all stainless steel construction guarantees superior mechanical properties and corrosion resistance.

Application	To have the capacity to heat _____ gpm of water in the tubes
Domestic Water Supply	from _____ F to _____ F using _____ psi steam in the shell.
Easy removal of tube bundle Unaffected by thermal expansion	Unit to be constructed in accordance with ASME requirements. ASME Stamp is (not) required.
	Unit to have no more than _____ ft. of length and _____ psi pressure drop.



Complete model number as per the following example:



Stainless steel tubes have superior mechanical properties and corrosion resistance. TIG weld provides the best tube to tubesheet joint (ASME joint efficiency equals 1).

Design Pressure & Temperature	Side	Standard	Customized
	Shell	150 psi @ 400 F	
	Tube	150 psi @ 400 F	
Head		Stainless Steel	
Shell		Carbon Steel	
Tubesheet		Stainless Steel	
Tubes O.D.		316 Stainless Steel	
		1/2", 5/8", 3/4"	

- * - Various materials and working conditions can be provided.
- Legs can be supplied when specified.
- Space equal to or greater than dimension "B" should be provided for removal of tube bundle.
- * - All Heat Exchangers are designed and manufactured according to ASME Code, Section VIII, Div.1. ASME U-1 Form, Stamp, and N.B. Number are provided upon request for an additional cost.
- * - All heaters have a one year guarantee against failure caused by materials or workmanship, but not against gasket failure or damage caused by corrosion, water hammer, fouling, sealing, excessive pressure or temperature, incorrect installation or other factor beyond the manufacturer's control.

“U-tube” Steam to Water Instantaneous Heaters Series “ADW”

Threaded couplings are according to ANSI NPT for sizes up to 3".
Flanged connections are optional.
For 4" and up the connections are flanged according to ANSI.

Direction and sizes of connections may be specified by the customer, providing easy assembly of a new system or replacement of an old heat exchanger.

The actual dimensions of a heat exchanger depend upon its performance and may be modified during the preparation of working drawings.

Dimensions Table

ADW	A	D	E	F			G			H	J	Head
				2 PASS	4 PASS	6 PASS	2 PASS	4 PASS	6 PASS			
*-4-**	7-1/4	4-1/2	7	2-1/2	2-1/2		1-1/4	1		2	3/4	Type "A"
*-5-**	8-1/4	5-9/16	7	2-1/2	2-1/2		1-1/4	1		2-1/2	1	
*-6-**	9-1/4	6-5/8	7	3-1/4	2-7/8	4-3/4	2	1-1/2	1-1/4	2-1/2	1	
*-8-**	12	8-5/8	9	5	3-7/8	6	2-1/2	2	2	4 Flg	1-1/4	
*-10-**	15	10-3/4	10	5-7/8	4-1/4	7-5/8	3	3	2-1/2	5 Flg	1-1/2	
*-12-**	17	12-3/4	11	6-1/2	6-1/4	9	4 Flg	3	3	6 Flg	2	Type "B"
*-14-**	19	14	15	22	7	22	5 Flg	4 Flg	3	8 Flg	2-1/2	
*-16-**	21	16	16	24	12	24	6 Flg	5 Flg	4 Flg	8 Flg	2-1/2	
*-18-**	23	18	18	27	13	28	8 Flg	5 Flg	4 Flg	10 Flg	3	
*-20-**	25-1/2	20	18	28	14	30	8 Flg	6 Flg	5 Flg	10 Flg	3	
*-24-**	29-1/2	24	20	32	16	34	10 Flg	8 Flg	6 Flg	12 Flg	4	
TYPE												
SIZE												

Customized Connections →

Dimensions in inches Weight in pounds

ADW		**24	**30	**36	**42	**48	**54	**60	**66	**72	**78	**84	**90	**96	**108	**120	**144	
*-4-**	B	33	39	45	51	57	63	69	75	81	87	93	99	105	117	129	153	
	C	22	28	34	40	46	52	58	64	70	76	82	88	94	106	118	142	
	WGT	68	75	83	90	96	104	112	119	127	134	141	148	156	172	188	204	
*-5-**	B	34	40	46	52	58	64	70	76	82	88	94	100	106	118	130	154	
	C	22	28	34	40	46	52	58	64	70	76	82	88	94	106	118	142	
	WGT	100	115	130	145	160	175	190	205	230	245	260	275	290	320	350	380	
*-6-**	B	34	40	46	52	58	64	70	76	82	88	94	100	106	118	130	154	
	C	22	28	34	40	46	52	58	64	70	76	82	88	94	106	118	142	
	WGT	134	148	162	176	190	204	218	233	248	261	276	290	305	335	365	395	
*-8-**	B	36	42	48	54	60	66	72	78	84	90	96	102	108	120	132	156	
	C	22	28	34	40	46	52	58	64	70	76	82	88	94	106	118	142	
	WGT	190	222	250	277	305	333	360	388	416	444	472	500	527	590	650	690	
*-10-**	B	37	43	49	55	61	67	73	79	85	91	97	103	109	121	133	157	
	C	21	27	33	39	45	51	57	63	69	75	81	87	93	106	118	142	
	WGT	320	348	377	404	432	459	487	515	544	571	599	626	653	710	766	812	
*-12-**	B	38	44	50	56	62	68	74	80	86	92	98	104	110	122	134	158	
	C	21	27	33	39	45	51	57	63	69	75	81	87	93	106	118	142	
	WGT	417	453	490	527	564	601	638	675	714	751	788	825	862	937	1011	1085	
*-14-**	B	55	61	67	73	79	85	91	97	103	109	115	121	127	139	148	172	
	C	23	29	35	41	47	53	59	65	71	77	83	89	95	107	119	143	
	WGT	660	704	748	791	835	879	923	967	1014	1058	1102	1146	1190	1282	1420	1558	
*-16-**	B	56	62	68	74	80	86	92	98	104	110	116	122	128	140	152	176	
	C	22	28	34	40	46	52	58	64	70	76	82	88	94	106	118	142	
	WGT	819	874	929	984	1040	1096	1152	1207	1271	1327	1383	1438	1494	1614	1725	1836	
*-18-**	B	62	68	74	80	86	92	98	104	110	116	122	128	134	146	158	182	
	C	24	30	36	42	48	54	60	66	72	78	84	90	96	108	120	144	
	WGT	1055	1130	1205	1280	1356	1431	1506	1582	1662	1742	1818	1893	1968	2129	2279	2430	
*-20-**	B	62	68	74	80	86	92	98	104	110	116	122	128	134	146	158	182	
	C	24	30	36	42	48	54	60	66	72	78	84	90	96	108	120	144	
	WGT	1258	1357	1456	1555	1654	1753	1852	1951	2062	2161	2260	2359	2458	2668	2866	3064	
*-24-**	B	68	74	80	86	92	98	104	110	116	122	128	134	140	152	160	184	
	C	24	30	36	42	48	54	60	66	72	78	84	90	96	108	120	144	
	WGT	1450	1560	1650	1750	1850	1950	2050	2150	2260	2360	2460	2560	2660	2870	3070	3270	