

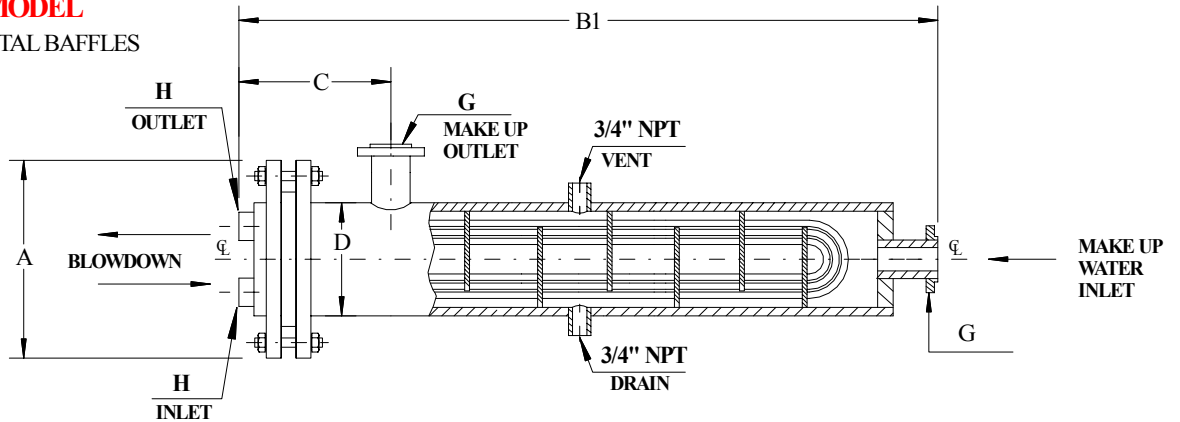
"MULTIPASS" BLOWDOWN HEAT EXCHANGERS SERIES "ABD"

The Alstrom "Multipass" Blowdown Heat Exchangers Series "ABD" are designed to heat make up water with blowdown water of boilers or steam generators. Two models are available, depending on the available space in the boiler room. Under the same performance, the longer Economy heater with its smaller shell diameter will be more economical. When the length of the heater is limited, the Compact model is recommended.

<p>Typical Applications Steam boilers. Steam generators.</p>	<p>To have the capacity to heat _____ gpm of make up water in the shell from _____ F to _____ F using _____ gpm blowdown water in the tubes, entering at _____ F</p>
<p>Easy removal of tube bundle. Unaffected by thermal expansion.</p>	<p>Unit to be constructed in accordance with ASME requirements. ASME Stamp is (not) required. Unit to have no more than _____ ft. of length and _____ psi pressure drop in the shell and _____ psi in the tubes.</p>

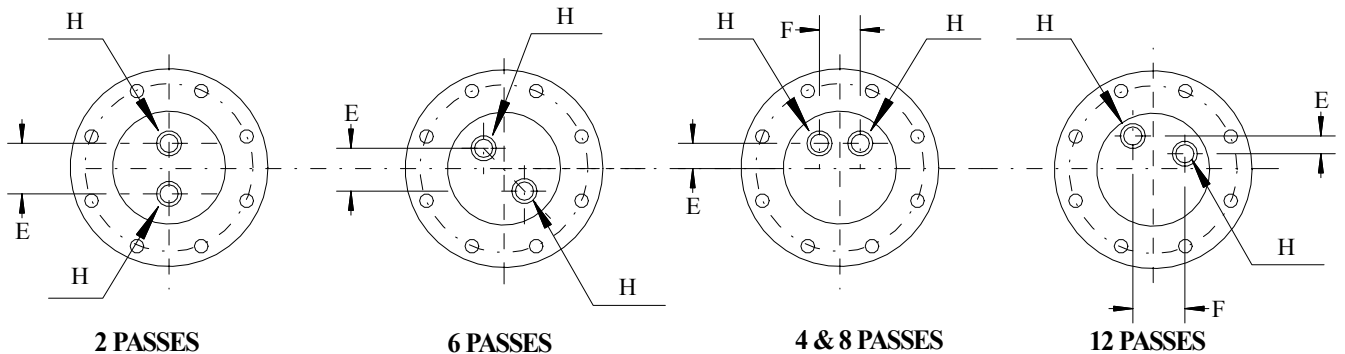
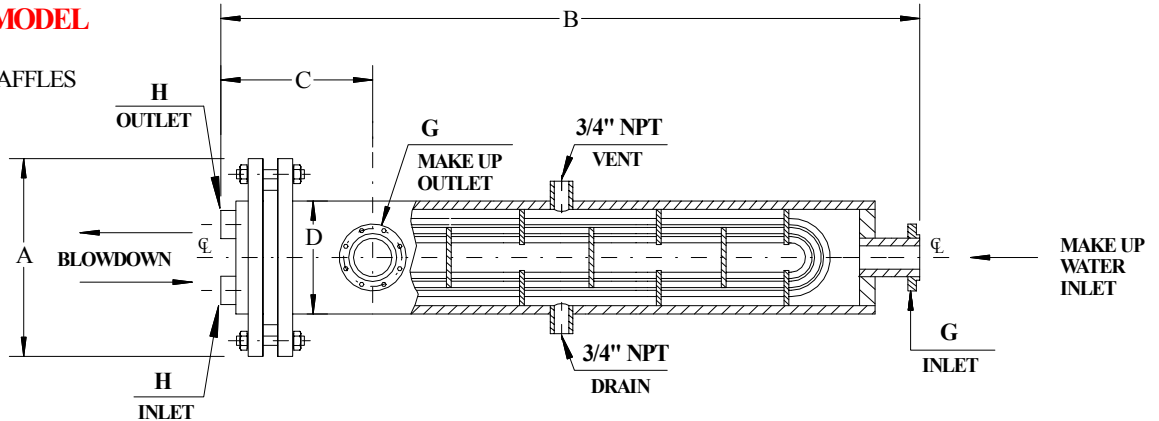
COMPACT MODEL

WITH SEGMENTAL BAFFLES

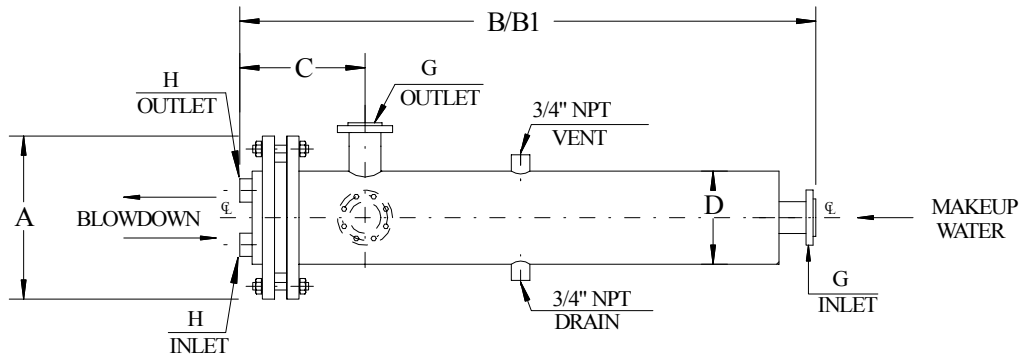


ECONOMY MODEL

WITH DOUBLE SEGMENTAL BAFFLES



"MULTIPASS" BLOWDOWN HEAT EXCHANGERS SERIES "ABD"



DIMENSIONS IN INCHES

ABD	A	B	B1	D	E					F				H				
					2 PASS	4 PASS	6 PASS	8 PASS	12 PASS	4 PASS	6 PASS	8 PASS	12 PASS	2 PASS	4 PASS	6 PASS	8 PASS	12 PASS
-4-	7-3/4	82	154	4-1/2	2-1/2	7/8	3/4			2-1/2	2-3/8			1-1/4	1	1		
-5-	9-1/4	82	154	5-9/16	2-1/2	7/8	7/8	7/8		2-1/2	3-1/4	3-1/2		1-1/4	1	1	1	
-6-	9-1/4	82	154	6-5/8	3-1/4	1	1	1-1/8		2-7/8	3-1/2	4		2	2	2	1-1/2	
-8-	12	82	154	8-5/8	5	1-1/4	1-1/4	1-1/4	7/8	3-7/8	5-1/4	4-1/2	2	2-1/2	2-1/2	2-1/2	2	1-1/2
-10-	15	82	154	10-3/4	5-7/8	1-3/4	2	1-1/2	1	4-1/4	6	6-1/2	5-1/2	3	3	3	2	2
-12-	17	82	154	12-3/4	6-1/2	2	1-1/8	1-3/4	2-1/2	6-1/4	6-1/2	7	6-1/2	4 FI	4 FI	4 FI	3	2-1/2
-14-	19	82	154	14	7-1/2	2-1/4	2-1/2	2	3	6-1/2	6-3/4	7-1/2	7	6 FI	5 FI	5 FI	4 FI	3
-16-	21	82	154	16	8-1/2	2-1/2	2-3/4	2-1/4	3-1/2	8	9	8-1/4	12	6 FI	5 FI	5 FI	4 FI	4 FI
-18-	23	82	154	18	9-1/2	2-3/4	2-7/8	2-1/2	4	8-1/2	10-1/2	9	14	8 FI	6 FI	6 FI	5 FI	4 FI
-20-	25-1/2	82	154	20	11	3-1/4	3-1/2	3	4-1/2	9-1/2	11-1/4	10	16	8 FI	6 FI	6 FI	5 FI	5 FI

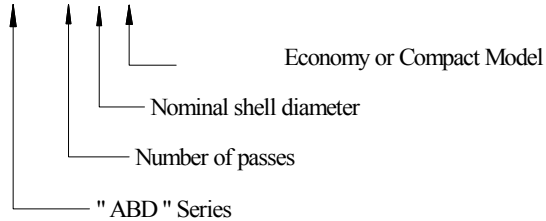
↑ CUSTOMIZED HEAT EXCHANGER

RECOMMENDED SHELL CONNECTIONS

FROM	TO	G	C
GPM	GPM	INCHES	INCHES
	4.6	1/2	6-1/2
4.6	10.0	3/4	6-1/2
10.0	20.0	1	7
20.0	30.0	1-1/4	7
30.0	40.0	1-1/2	7
40.0	70.0	2	7-1/2
70.0	100.0	2-1/2	7-1/2
100.0	150.0	3	7-1/2
150.0	260.0	4	12
260.0	290.0	6	13
290.0	1000.0	8	14
1000.0	1600.0	10	15
1600.0	2400.0	12	16

Complete model number as per the following example:

ABD-6-8-E



Design Pressure	Shell Side	Tube Side	100 psig @ 650 deg. F 150 psig @ 650 deg. F
Head Pipe			SA312 Gr. 304 S.S.
Tubing			SA249 Gr. 316 S.S.
Shell Pipe			SA312 Gr. 304 S.S.
Tubesheet			SA240 Gr. 304 S.S.
Shell Flange			SEE DETAIL
Shell and Head Cover			SA240 Gr. 304 S.S.
Couplings			SA182 Gr. 316 S.S.

